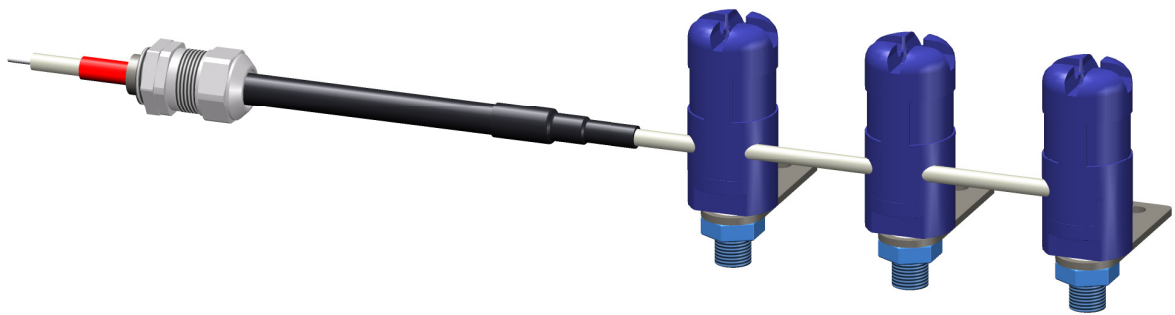
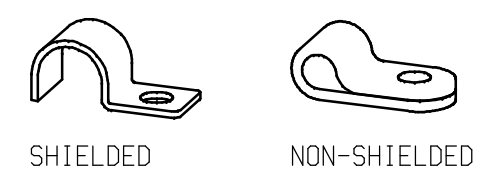


NOTES
 ON ORDER PLEASE SPECIFY:
 * TOTAL CABLE LENGTH
 AND WHEN REQUIRED:
 ** CENTRE TO CENTRE DISTANCE WHEN PRE-ASSEMBLY OF
 ADDITIONAL CE NOZZLES BY SIMCO-ION IS REQUIRED
 *** STRIPPED LENGTH TO MOUNT ADDITIONAL CE NOZZLES

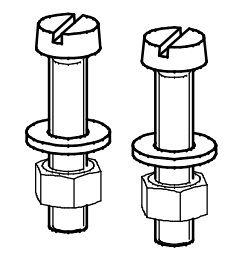
- ADDITIONAL CE NOZZLES CAN BE DELIVERED SEPERATELY FOR
 MOUNTING ON LOCATION OR PRE-ASSEMBLED BY SIMCO-ION
 - READ THE MANUAL FOR DETAILED MOUNTING INSTRUCTIONS



MOUNTING MATERIALS INCLUDED

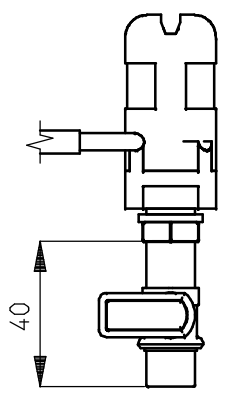
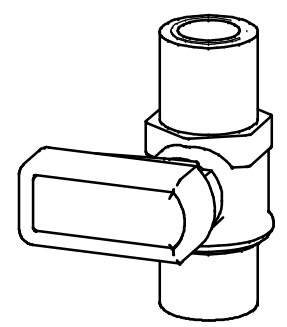


SHIELDED NON-SHIELDED
 CABLE CLAMPS
 4 PER METER CABLE LENGTH



2 MOUNTING SCREWS
 M5X25 WITH WASHERS AND NUTS
 PER NOZZLE

OPTIONAL VALVE
 1/8 BSP FEMALE - FEMALE
 P/N 9146982101



 An ITW Company www.simco-ion.nl Tel: +31 (0)573 288333	Name: Nozzle type HE with coax shielded cable				Drawn: AB	Part no.: 1606xxxxxx
	CAD generated NOT updated	Dimensions in mm	Date: 24-7-2019	A3 M: 1:1	ECN2019-025	Check: -